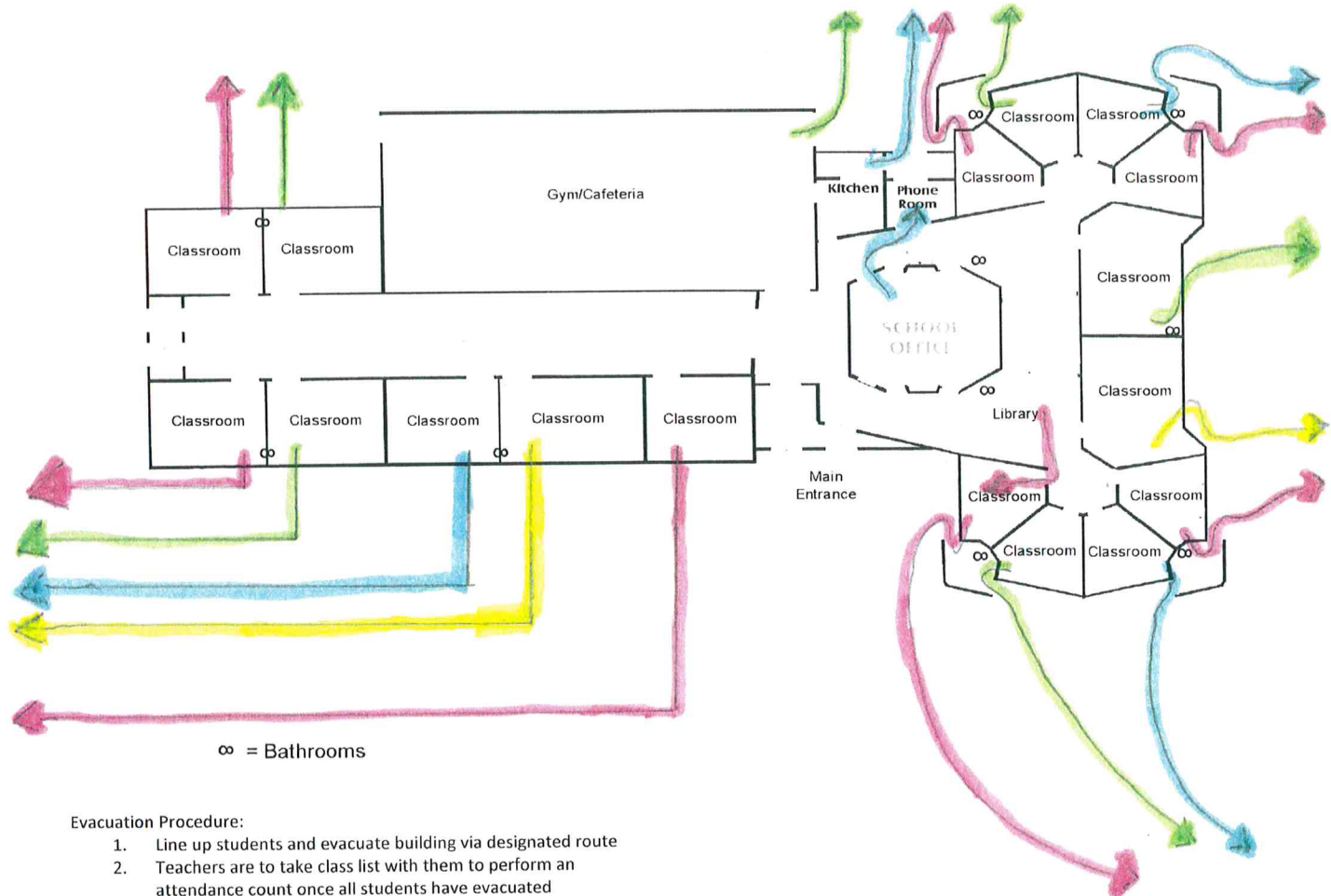


Charlton Heston Academy Fire Drill Routes and Procedures

SCHOOL FLOOR PLAN



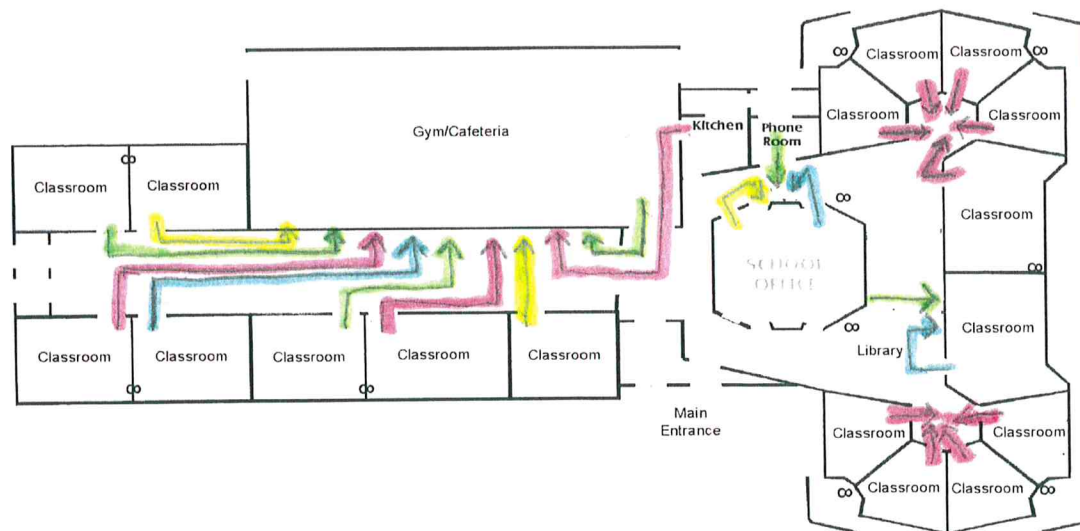
Evacuation Procedure:

1. Line up students and evacuate building via designated route
2. Teachers are to take class list with them to perform an attendance count once all students have evacuated
3. Once all students have been evacuated, turn off the classroom lights and close all doors before exiting the building

Staff members who are supervising students not in the traditional classrooms will exit the building according to the map, and then regroup the students with the rest of their classes in order to facilitate accurate attendance counts

Charlton Heston Academy Tornado Drill Routes and Procedures

SCHOOL FLOOR PLAN



∞ = Bathrooms

Student and staff must always use interior walls that are away from windows!

Shelter Procedure:

1. Line up students and go to designated areas when tornado announcement is made over the PA system.
2. Open windows in classroom
3. Close all doors
4. Students sit on the floor with a book over their head. Staff to assume the same position.
5. No talking during the procedure
6. When directed by the administrator, return in an orderly (single file) to classrooms

Staff who are supervising students not in the traditional classrooms must take students to the nearest designated area at the time the tornado announcement is made.

National Weather Service-Gaylord

Call 989-731-3384

Richfield Township Department of Public Safety

Call 911